



i9 Development

End of Project Report

| Local Labour Distance | People count | People Days | Workforce % |
|-----------------------|--------------|-------------|-------------|
| Within 10 miles | 175 | 3943 | 45.55% |
| Between 10-20 miles | 89 | 154 | 17.81% |
| Between 20-30 miles | 37 | 368 | 4.25% |

*Figures collated from turnstile data, system in operation between May 2020 – June 2021

Local £ Spend Distance Within 10 miles

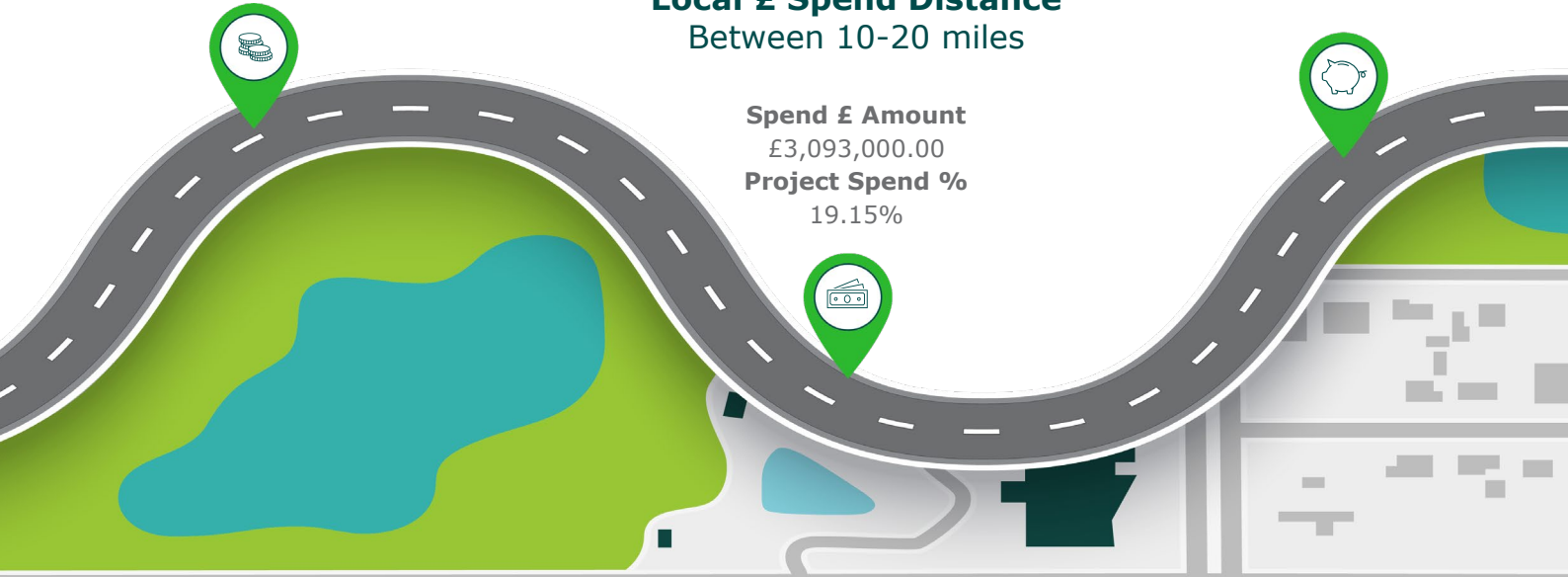
Spend £ Amount
£1,417,500.00
Project Spend %
9.15%

Local £ Spend Distance Between 20-30 miles

Spend £ Amount
£70,000.00
Project Spend %
0.45%

Local £ Spend Distance Between 10-20 miles

Spend £ Amount
£3,093,000.00
Project Spend %
19.15%



*Primarily, project supply chain partners regardless of locality looked to source material provisions locally wherever relevant and possible, to contribute towards local spend.

**Additionally, GRAHAM procured skips, cleaning supplies and miscellaneous materials from local suppliers throughout project lifespan.

19, Wolverhampton Project Impact Created:



537

Students Engaged



42

GRAHAM Staff supported student engagement



90

GRAHAM Staff Delivery Hours



40

GRAHAM Staff Preparation Hours



7

Existing Site-Based Apprentices



4

Work Experience Placements



5

L&M Training Opportunities



8

New FTE local jobs



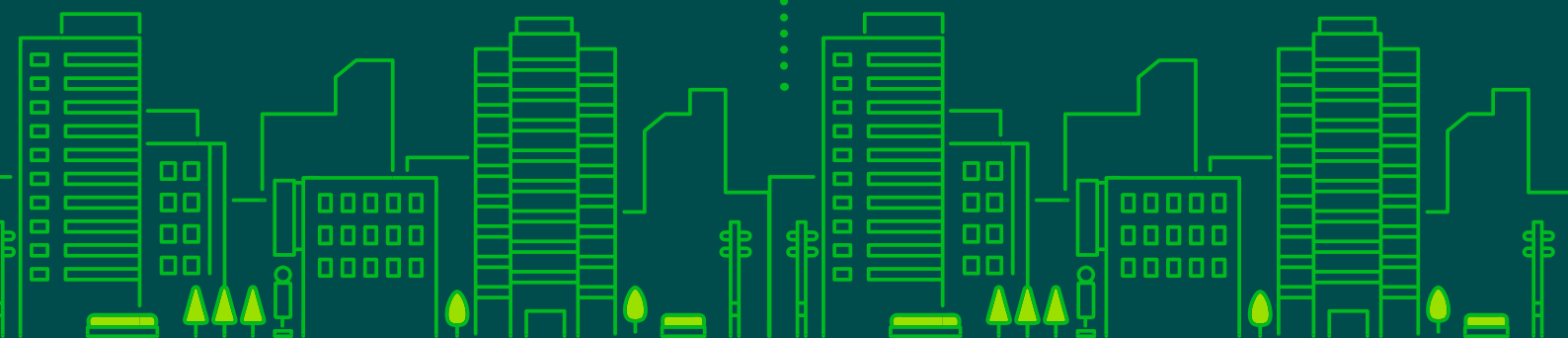
22

Events & EA Meetings Supported



281

Apprentice Days



Education – Curriculum Support and Careers



From the early onset of the i9, Wolverhampton project, we had created an Employment and Skills plan to deliver a range of outcomes to support local emerging talent to include, but not limited to; site visits, site-based work experience, internships and curriculum support.

Working in collaboration with key local stakeholders, the i9 Project Management and Social Impact Team were quick to react to the pandemic and its immediate restrictive and negative impact for local students.

Immediately our team worked directly with The University of Wolverhampton and its Head of Civil Engineering, Peter Mills to develop a new alternate engagement and delivery plan. Working closely to the University's Module Leader, Dr Renukappa we developed a partnership to create a delivery plan that was relevant to student needs and their learning requirements.

Our i9, Wolverhampton Management team through resilience and key partnerships, successfully delivered their first bespoke virtual Masterclass Presentation and Q&A session for the budding engineering students.

I9, Project Manager, Gary Irving said, "Covid-19 brought with it many challenges, however our Industry in particular faces challenges daily, making us extremely resilient and quick to adapt in our resolutions" and went on to say, "After discussions with the University Professors, we decided to create an interactive 'Masterclass Presentation' for their learners. We asked them which topic areas they would like us to cover, to support and enrich their current modules, we listened and embedded their requests within our presentation."

// Covid-19 brought with it many challenges, however our Industry in particular faces challenges daily, making us extremely resilient and quick to adapt in our resolutions. //



During the interactive Q&A session, the team also received fantastic project and industry related questions from students, after the event Head of Civil Engineering, Peter Mills, forwarded student feedback including comments such as;

"The presentation on the i9 Project was clear, informative, and interesting. It covered all aspects from the start to current state of the project, changes due to site constraints and effects of COVID on the project.

I found having Gary and Chris talking about the project was great as you could really see their passion for their project, and they know all the ins and outs of it making it more personal and interesting to hear about. The presentation slides themselves were full of great information, drawings and images; this aided their great presentation. I really enjoyed hearing about the i9 and hope to see the end result"

St Matthias Design & Build Mentoring programme.

Our **Social Impact Advisor**, Louise Seddon worked in direct partnership with **Carol Codner, City of Wolverhampton EBP, Education and Enterprise Advisor** to deliver engagement and essential support to build skills, knowledge and resilience of city wide students from Wolverhampton.

Our schools engagement programme also included; Ormiston New Academy, Colton Hills, St. Edmund's, OLSC, Smestow, The King's School, Wednesfield High and The Royal Wolverhampton.

Through their collaboration another opportunity to create further lasting impact was offered through an additional role of Enterprise Advisor for -

THE CAREERS & ENTERPRISE COMPANY

The Careers & Enterprise Company – Black Country.

Our Social Impact advisor took on the role and subsequently we were partnered with St Matthias High School and their careers leader Ms Rebecca Neath. Through Compass meetings we developed our relationship and GRAHAM suggested a mentoring programme to support 12 of Year 10 St Matthias students.

Delivering lasting impact

The GRAHAM Design & Build Mentoring programme student participants were introduced to the programme through a face to face presentation delivered by GRAHAM at St Matthias school. The students were given a project brief to create a winning garden and reflection space within school grounds for other students to access. The project brief and requirements included creating 4 teams of 3 and within each team students had to decide who should be **Project Manager, Design Manager and Sustainability Manager** within each group. Working to the brief each team also submitted at least 2 ideas to attract birds, wildlife and pollinators into their garden designs.

A unique programme to include a blended delivery of both face to face and virtual meant students personally met with project management teams and had the opportunity to ask them direct questions through our 'Meet the experts' sessions to support their designs. In the finale, each team presented their design ideas to a panel of judges and we created the winning design through pro-bono works and voluntary support, including donations and support from our i9, Supply chain Partners.

Rebecca Neath, Careers Leader at St Matthias said: "The garden project was a unique opportunity for the school and its students to be creative and work on something from beginning to end. "From starting out with a project brief, coming up with design concepts, and then seeing the completed project brought to life, it has been an invaluable and enjoyable experience. GRAHAM was encouraging and supportive throughout the lifespan of the project, making the experience a really positive one for the students and whole school community."

One student said: "It was great to put our creative skills to play and see the final outcome of the project. We really enjoyed playing the different roles and jobs of construction and putting our ideas into a real-life project."



Pro-Bono St Matthias Design
& Build Reflection Garden Costs.



£450

Plants



£950

Roof to pergola -materials and labour



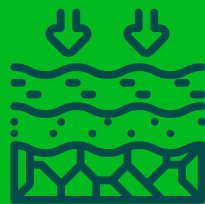
£1500

Timber for Pergola and planters



£650

Labour for pergola and planter



£500

Topsoil for planter



£65

Fixings

£100

Water fountain



£40

Weed barrier



£250

Skip



£850

General labour costs



£500

Steel for pergola



£5,855

Total Build Costs

Celebration Presentation

On 16th November 2021, GRAHAM celebrated the 12 learners who participated in the GRAHAM Design & Build programme through the delivery of a special award ceremony.

Our i9 Project Manager, Gary Irving personally presented each of the students with their certificates outlining their skills and knowledge gained and each received GRAHAM goody bags with special scientific calculators in advance of their final exams.

The garden project winners additionally received their Winning Certificates for their CV portfolios and each received £25 Amazon Gift Cards.



Hayden Jordan, pictured after receiving his award and prize.



Kaci McDonald, pictured after receiving her award and prize.

Kaci's identical twin sister Keira McDonald also received a winner's certificate and prize.



Bailey Bridgen, pictured after receiving his award and prize.

We will remain active in collaboration with St Matthias School through our Enterprise Advisor role and commitments.

We will deliver our support and industry guidance through compass meetings and employer engagement, careers events and employability and skills focused activities such as; CV writing workshops, Mock Interviews and 'Guess my Job'.

**Delivering
lasting impact**